

性能:

额定电流: 2.0A

额定电压: 12V

耐电压: 500V

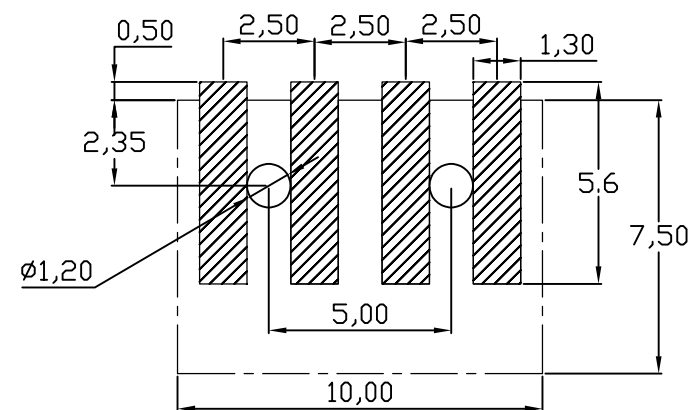
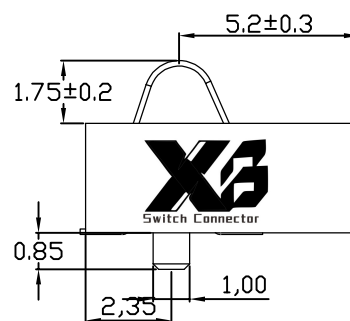
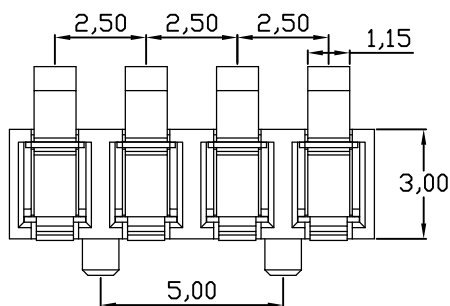
接触电阻: 30mΩ

绝缘电阻: 500MΩ

工作温度: -40℃~+85℃

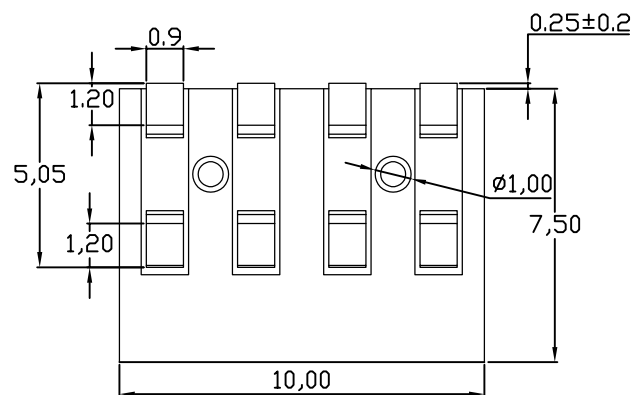
塑件(材质): LCP


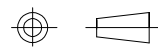
接触点(材质): 磷铜, 镀金



RECOMMENDED PCB LAYOUT

TOP VIEW (. XX ± 0.05)



|           |              |      |        |   |            |   |  |  |  |
|-----------|--------------|------|--------|---|------------|---|--|--|--|
| 版本REV.    | 更新标记REVISION | NOTE | 日期DATE | 未注公差 TOLERANCE  |            |  <b>东莞市溪榜电子有限公司</b><br>Switch Connector DONG GUAN XI BANG ELECTRONICS CO., LTD | <b>弹片电池座连接器</b><br>Bullet Batteryholderconnector |  |  |
|           |              |      |        | X. ±0.35  | X. ° ±4°   |   |  |  |  |
|           |              |      |        | X. X ±0.25  | X. X ° ±3° |   |  |  |  |
|           |              |      |        | X. XX ±0.15   | X. XX ±2°  |   |  |  |  |
| 绘制DRAWN   | 高鹏           |      |        | X. XXX ±0.05  | X. XXX ±1° | 图号MODEL: XB-BC-82-4PD300  |  |  |  |
| 设计DES' D  | 庞东           |      |        | 视图方法 PROJECTION   |            |   |  |  |  |
| 审核CHK' D  | 贺龙飞          |      |        |  |            | A4  |  |  |  |
| 批准APPV' D | 杨军           |      |        | 比例SCALE: 3: 1   |            |   |  |  |  |
|           |              |      |        | 单位UNIT: mm  |            | 页码SHEET: 共1页 第1页  |  |  |  |