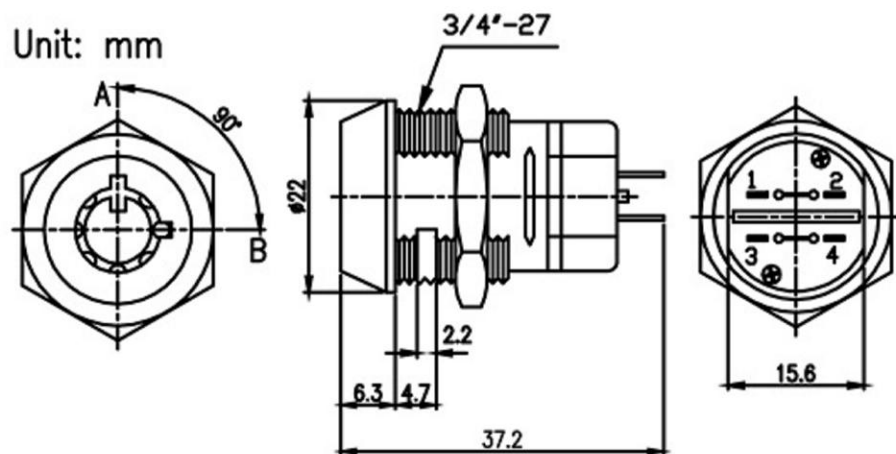


ROHS

Unit: mm



Recommended hole size

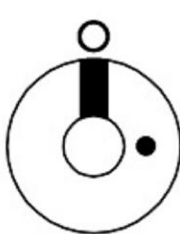


Fig. 1

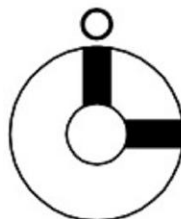


Fig. 2



Fig. 3

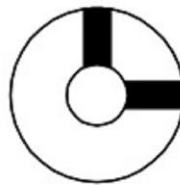
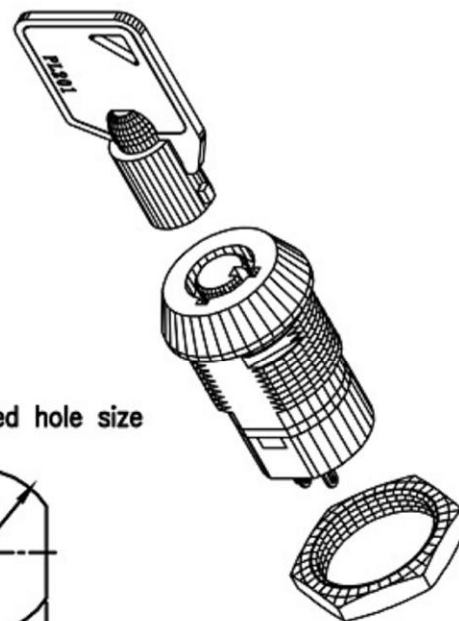
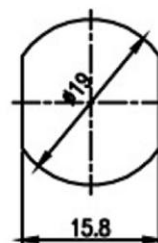
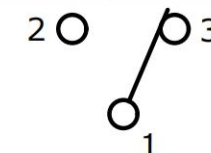


Fig. 4



SWITCH FUNCTION	
POS. 1	POS. 2
ON	ON
1-3	1-2



▲ SPDT ON-ON
CONTACT CONFIGURATION

NOTE:

1. ALL DIMENSIONS IN mm [INCH]
2. GENERAL TOLERANCE: X.X = ± 0.4
X.XX = ± 0.25
3. TERMINAL NUMBERS FOR REF ONLY
- ▲ 4. CONTACT MATERIAL: SILVER
5. RATING: 2A 24VDC
6. ELECTRIC LIFE: 50,000 MAKE-AND-BREAK CYCLES AT FULL LOAD.
7. INSULATION RESISTANCE: 1,000 M Ω MIN.
8. DIELECTRIC STRENGTH: 1,500 VAC MIN. FOR 1 MINUTE
9. CONTACT RESISTANCE: 50m Ω MAX. @ 1A 12VDC
10. OPERATING TEMP.: -20°C to 55°C
11. ▲ DENOTES CRITICAL PARAMETER.
- ▲ 12. INGRESS PROTECTION: IP40
- ▲ 13. HARDWARE SUPPLIED: KEY, O-RING, AND HEXNUT

Fig No	Lock Number	Pole	Positions	Terminals	Key Pulls	Turn	⬆	⬇	Type
1	S206A-1	2	2	4	1	90°	Off	On	DPST
2	S206A-2	2	2	4	2	90°	Off	On	DPST
3	S206B-2	2	2	4	1	90°	Off	On	SPDT
4	S206B-2	2	2	4	2	90°	Off	On	SPDT

Zinc alloy die cast housing and cylinder.

Bright chrome plated standard.

7 pin tumbler mechanism.

Steel made tubular keys, nickel plated.

Silver plated contacts and terminals.

S206A 2 position (off-on) 4 terminals. (2NO 2NC)

S206B 2 position (on-on) 4 terminals. (1NO 1NO)

Hex nut or speed clip mounted.

The material contained in this drawing is the property of XiBang. Any use other than that specifically authorized by XiBang is prohibited. The above drawing IS subjected to change for improvement without prior notice.



东莞市溪榜电子有限公司
DONG GUAN XI BANG ELECTRONICS CO., LTD

TITLE : XB KEY SWITCH ELECTRONIC LOCK

MODEL : XB-S-206A



TOLERANCE
≤1.5mm±0.1
> 1.5mm±0.2
>10mm±0.3

ANGLE
±2°

UNIT : MM	DWN.	ZENQ. CHEN	DATE	
SCALE : 3 : 1	CHK'D	PENG. GAO	DATE	
VBRSION	01	APPD.	FEI. LONG. HE	DATE

7	SPRING	STEEL WIRE	1	NATURE
6	STEEL BALL	STEEL	1	NATURE
5	BOARD	PHENOLIC RESIN	1	NATURE
4	CONTACT CLIP	PBS STRIP	2	Ag PLATED
3	FRAME	IRON STRIP	1	Ni PLATED
2	TERMINAL	BRASS STRIP	8	Ag PLATED
1	KNOB	POM	1	BLACK
NO.	PART NAME	MATERIAL	QTY.	FINISHING