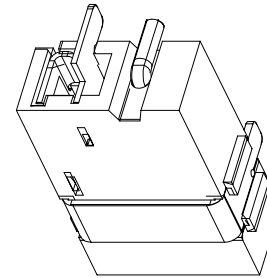
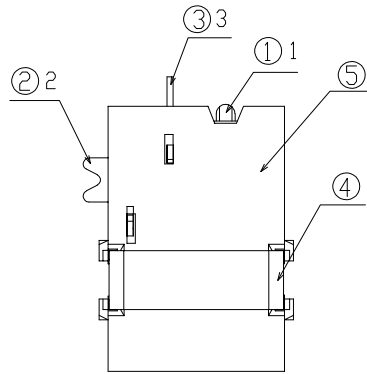
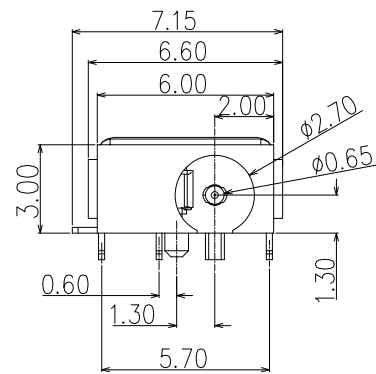
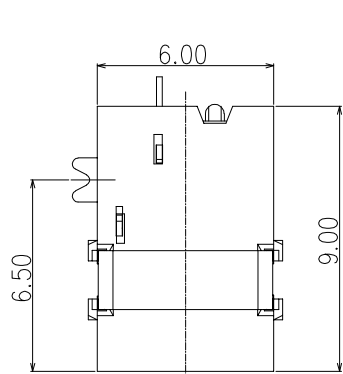
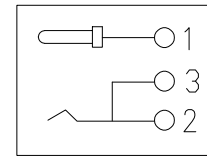


REV.	ECN NO.	DESCRIPTION	DESIGN	DATE
A	XXXXXXX	INITIAL	Kai	2017.07.24

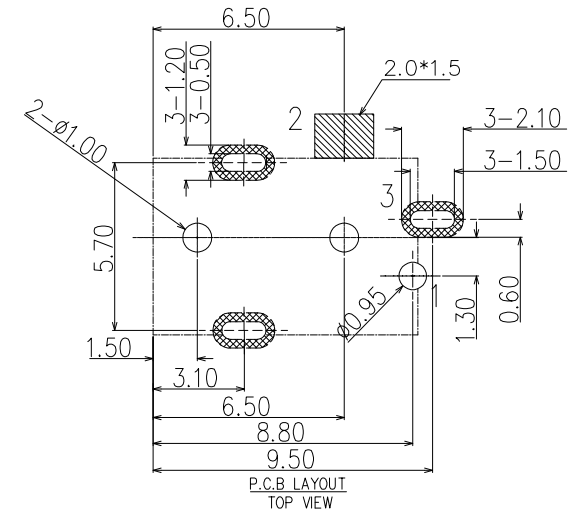
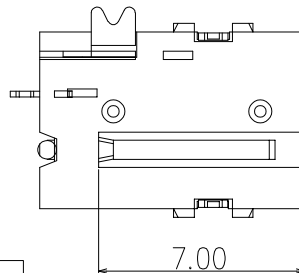
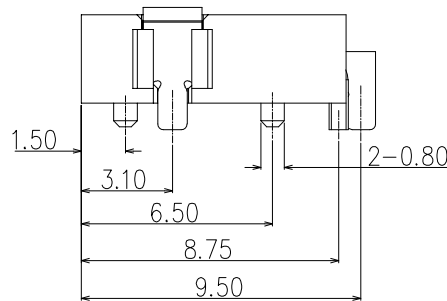


3D VIEW

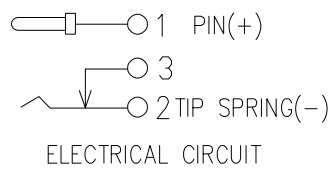
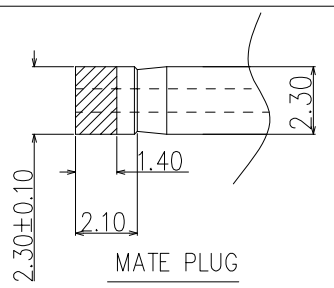
- SPECIFICATIONS:
- ELECTRICAL CHARACTERISTICS:
    - 1-1. RATING: 24V 1A
    - 1-2. CONTACT RESISTANCE: 50mΩ MAX.(INITIAL)
    - 1-3. DIELECTRIC WITHSTANDING VOLTAGE: 500V AC FOR ONE MINUTE
    - 1-4. INSULATION RESISTANCE: 100MΩ MIN. MEASURED BY 500V DC
  - MECHANICAL CHARACTERISTICS:
    - 2-1. INSERTION FORCE : 0.3~3.0 KGF
    - 2-2. WITHDRAWAL FORCE : 0.3~3.0 KGF
  - LIFE TEST: 5,000 CYCLES MIN.



SCHEMATIC



5	HOUSING	1	HIGHT TEMPERATURE PLASTIC	Black
4	TERMINAL 3	2	COPPER ALLOY 0.2t	SILVER PLATING OVERALL
3	TERMINAL 2	1	COPPER ALLOY 0.2t	GOLD PLATING OVERALL
2	TERMINAL 1	1	COPPER ALLOY 0.2t	GOLD PLATING OVERALL
1	CENTER PIN	1	COPPER ALLOY 0.65	SILVER PLATING OVERALL
NO.	DESCRIPTION	QTY	MATERIAL	PLATING & COLOR



UNLESS OTHERWISE  
SPECIFIED TOLERANCES

DECIMALS:		ANGLES:	
DIM	TOL	DIM	TOL
X.	±0.50	X.	±2°
X.X	±0.30	X.X	±1°
X.XX	±0.20	X.XX	—
X.XXX	±0.10	X.XXX	—

DWG NO.	Q/XM-CP-RD-0036
DESIGN:	kai 2017.07.24
CHECK:	
APPROVED	

PART NAME:	DC电源插座
PART NO.	XB-DCJR0003-F04G1BR-A
REV.	UNIT: mm
A	SHEET: 1/1

**东莞市溪榜电子有限公司**  
DONG GUAN XI BANG ELECTRONICS CO., LTD.