

F

E

D

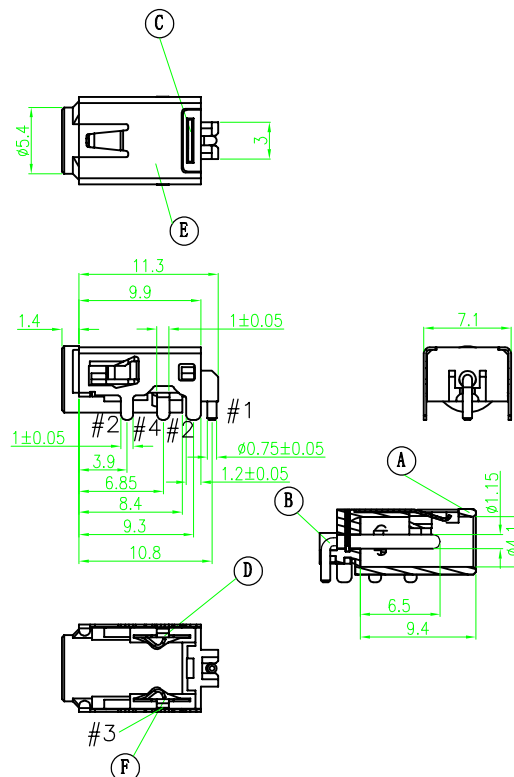
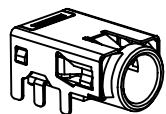
C

B

A

RoHS
Compliant

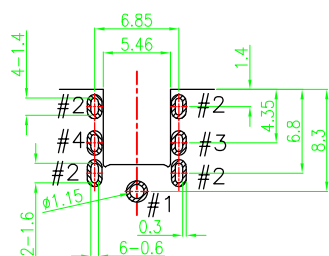
ZONE	SYMBOL	REVISION	APPROVAL	DATE



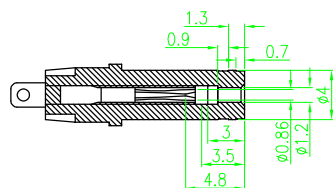
SPECIFICATIONS

- ELECTRICAL CHARACTERISTICS:
 - 1-1.RATING: DC 20V 5A
 - 1-2.CONTACT RESISTANCE: 30mΩ MAX(INITAL)
 - 1-3.DIELECTRIC WITHSTANDING VOL TAGE: 500V AC FOR ONE MINUTE
 - 1-4.INSULATION RESISTANCE: 100mΩ MIN,MEASURED BY 500V DC
- MECHANICAL CHARACTERISTICS:
 - 2-1.INSERTION FORCE: 3.0KG MAX
 - 2-2.WITHDRAWAL FORCE: 0.5KG-3.0KG
- LIFE TEST:5,000 CYCLES MIN
- OTHER GENERAL SPEC TO REFER"DC POWER JACK"SPEC
- TO CONFORM TO SINGATRON HAZARDOUS SUBSTANCE FREE SPEC
- GREEN PRODUCT IDENTIFICATION MARK ON JACK: ▲
- GREEN PRODUCT IDENTIFICATION LABEL ON PACKAGING: **G.P.PASS**
- FOR HAND SOLDERING LEAD FREE PROCESS
- PRINTED DATE CODE" YY MM DD ON TOP OF CONNECTOR

YY MM DD
 └─ DD: DAY
 └─ MM: MONTH
 └─ YY: YEAR



P.C.B LAYOUT



MATING PLUG

SCHEMATIC



No.	DESCRIPTION	MATERIAL	PLATING
A	BODY	PA6T+30%GF	BLACK
B	PIN	BRASS	Gold Flash Over Ni50u"
C	TERMINAL	SUS	N/A
D	SIGNAL B	YCUT-FX	Gold Flash Over Ni50u"
E	SHELL	C5210	Au1u" ON SOLCER TALL OVER Ni 50u"
F	SIGNAL A	YCUT-FX	Gold Flash Over Ni50u"

东莞市溪榜电子有限公司
DONG GUAN XI BANG ELECTRONICS CO., LTD.

PART NAME	DC POWER JACK			DESIGN	J.Pang	TITLE	
PART NO.	XB-DS-095			DRAWING	J.Pang	DWG. NO.	D185
UNIT: mm	MATERIAL	TOLERANCE UNLESS OTHERWISE SPECIFIED: 0.05±x.x 0.0±x.x 0.00±x.x	ANGLE	CHECK	G.C.Chen	REV.	A
	*		0°±3°	APPROVAL	H.K.Lai	SHEET	of

F

E

D

C

B

A